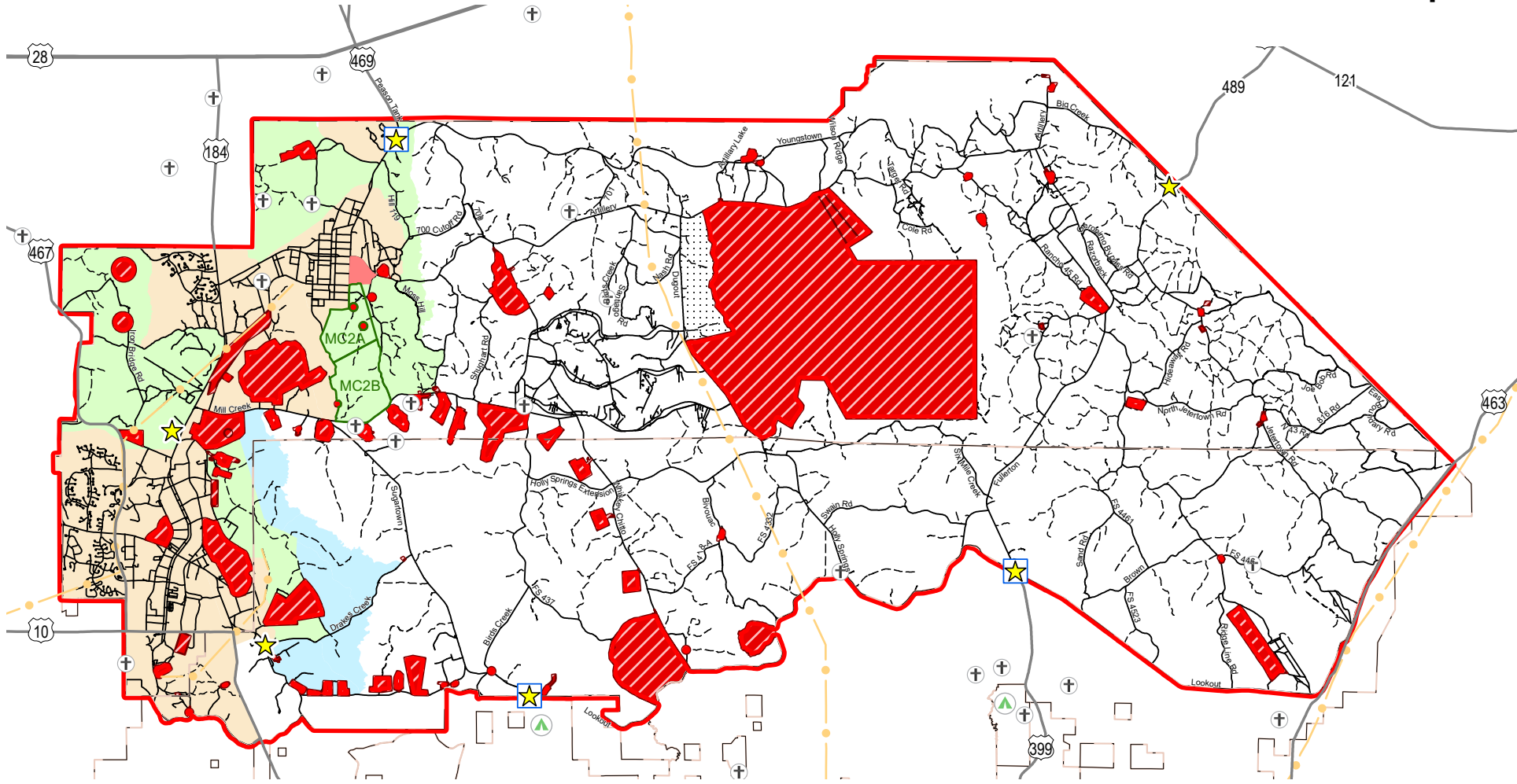
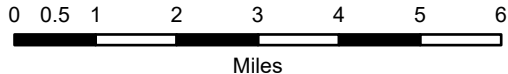


Fort Johnson WMA Map



- ★ Hunter Self Clearing
- ★ Self and Either Sex Clearing
- ⊕ Cemetery: NO HUNTING
- ▲ Camping Area
- ▭ WMA Boundary
- Pipeline
- ▭ Fort Johnson/USFS Boundary
- ▭ Experimental Hunting Area
- ▨ DANGER! NO HUNTING, NO ACCESS
- ▭ No Gun Hunting. Archery - Either Sex
- ▭ Bow, Shotgun (Slug) and Muzzle Loader For Deer, Small Game and Turkey
- ▭ Archery for Deer, Shotgun Only for Small Game and Turkey (No. 2 Shot or smaller)
- ▭ PCHPhuntingArea
- ▭ Closed to All WMA Activities
- ▭ Open for All WMA Activities



Hunting by reservation only for wheelchair confined Physically Challenged Hunter Permit (PCHP) in designated area.

Post Game Warden Office: 337-531-5222

Report Wildlife Violations: Louisiana Operations Game Thief
1-800-442-2511

All man made structures (ie. Radio Towers, Running Trails, Buildings, etc.) are off limits to all visitors.

Map does not supersede State or Installation Regulations

Vehicles must remain on roads and trails shown on map.