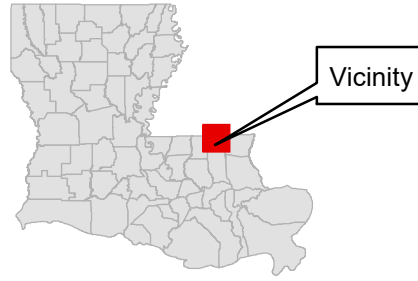
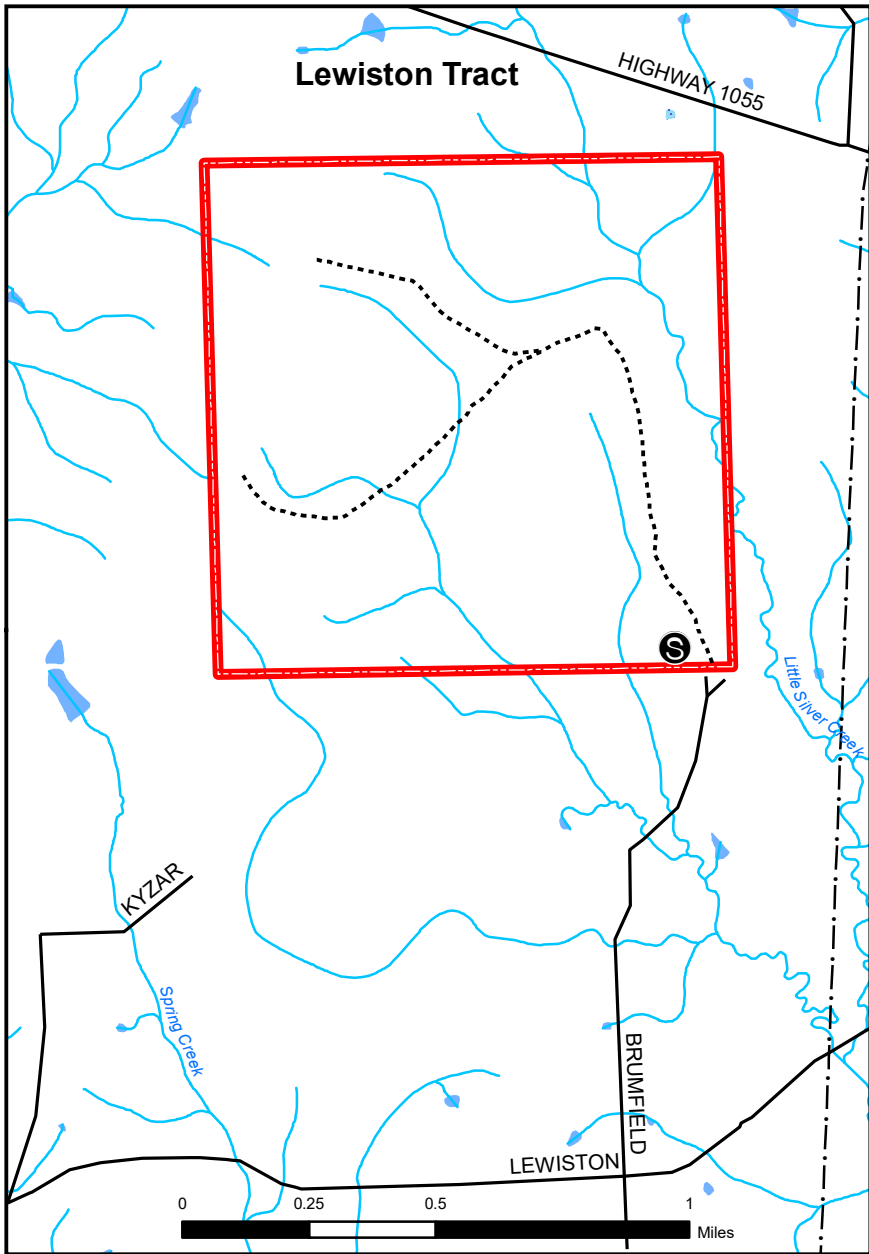


TANGIPAHOA PARISH SCHOOL BOARD

WILDLIFE MANAGEMENT AREA

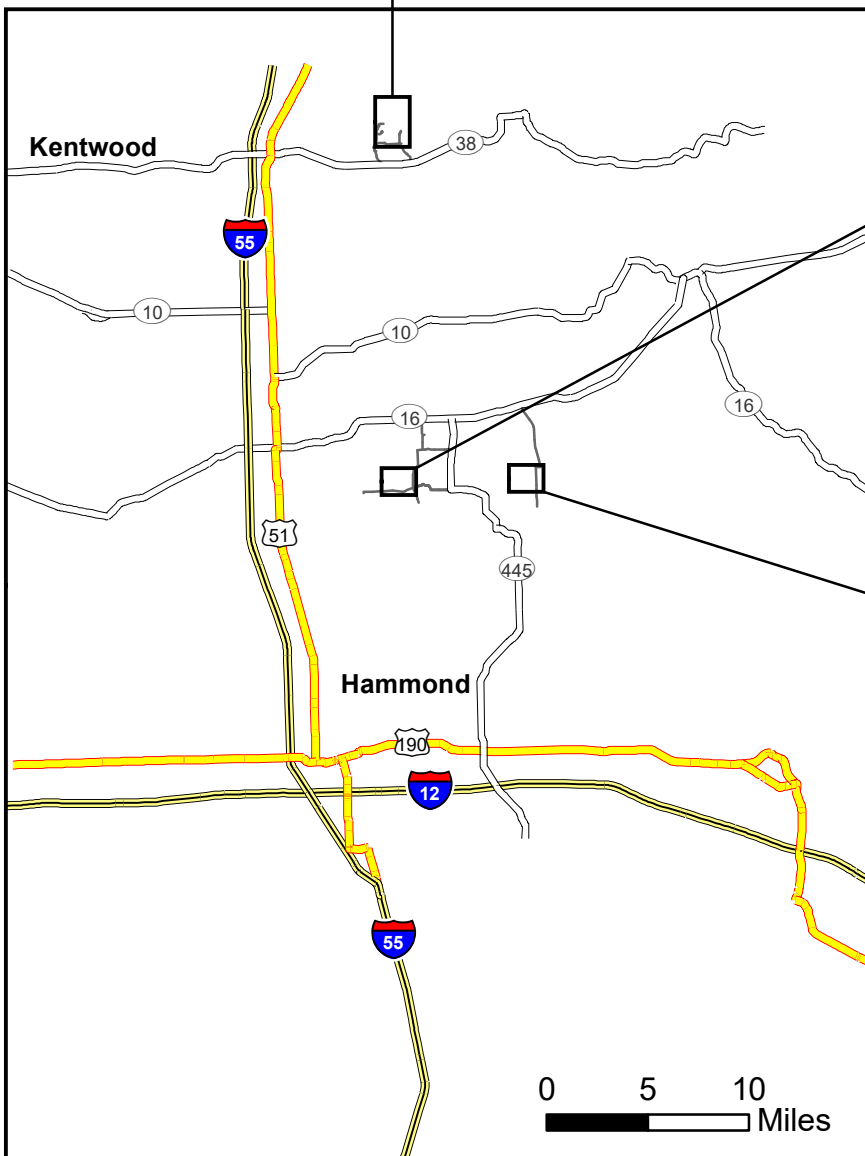
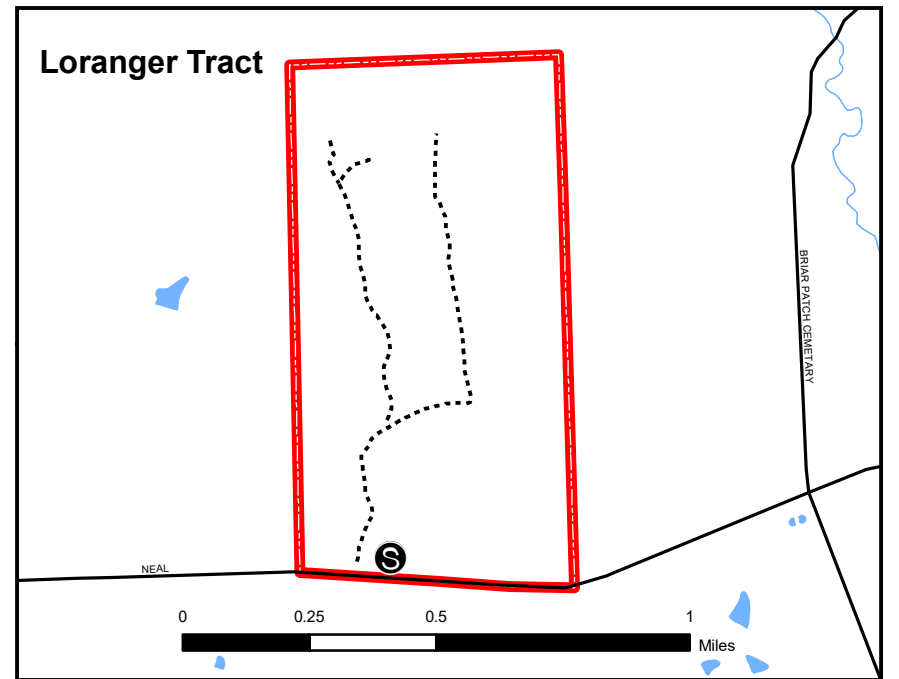
JULY 2023



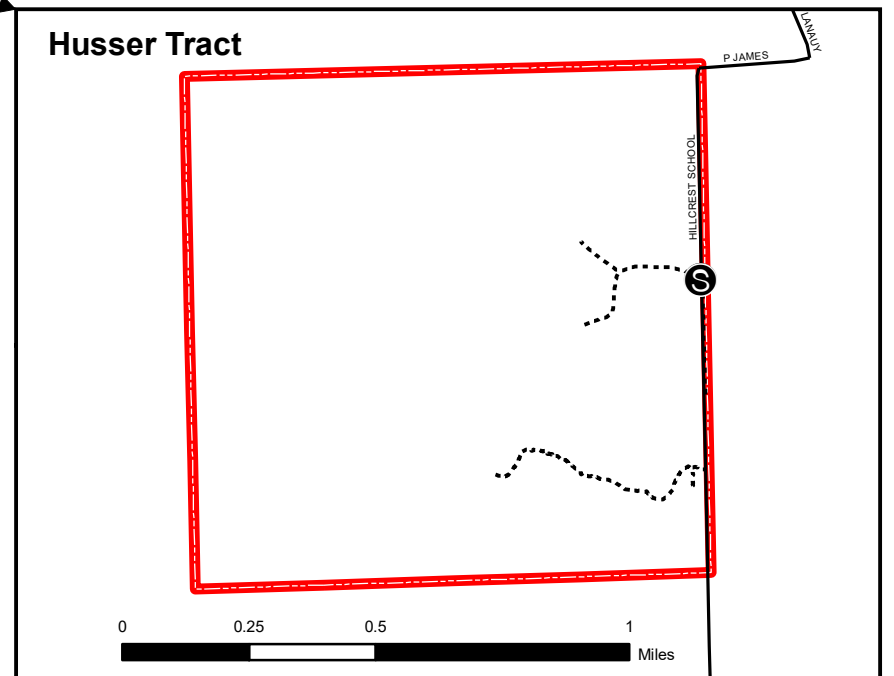
- Self-Clearing Permit Station
- Interstate
- US Highway
- State Highway
- Improved Road
- Trail
- WMA Boundary

Refer to Hunting Pamphlet for Additional Regulations and Information

Self-Clearing Permits Available at all Self-Clearing Permits Stations



OWNER
Tangipahoa Parish School Board
1,643 Acres



The Louisiana Department of Wildlife and Fisheries (LDWF) makes no representations or warranties whatsoever, whether express, implied, statutory or otherwise, as to the quality and accuracy in producing this map or data set. The user should be aware that the information on which it is based may have come from any of a variety of sources, which are of varying degrees of accuracy. Therefore, LDWF cannot guarantee the accuracy of this map or data set, and shall not be liable to any other person, party, or entity as a result of any reliance on this map or data set and/or any information contained herein or interpreted herefrom. Further, LDWF does not accept any responsibility for the consequences of its use.