

- Boat Launch
- Parking
- Self-Clearing Permit Station
- Interstate
- US Highway
- State Highway
- Improved Road
- Boardwalk
- Powerline
- Railroad
- Abandoned Railroad
- WMA Boundary
- Township & Range
- Section
- Parish Boundary
- Limited Access Area

N

OWNERS

Louisiana Department of Wildlife & Fisheries
and Tangipahoa Parish School Board
42,292 Acres

0 1 2
Miles

JOYCE

Wildlife Management Area

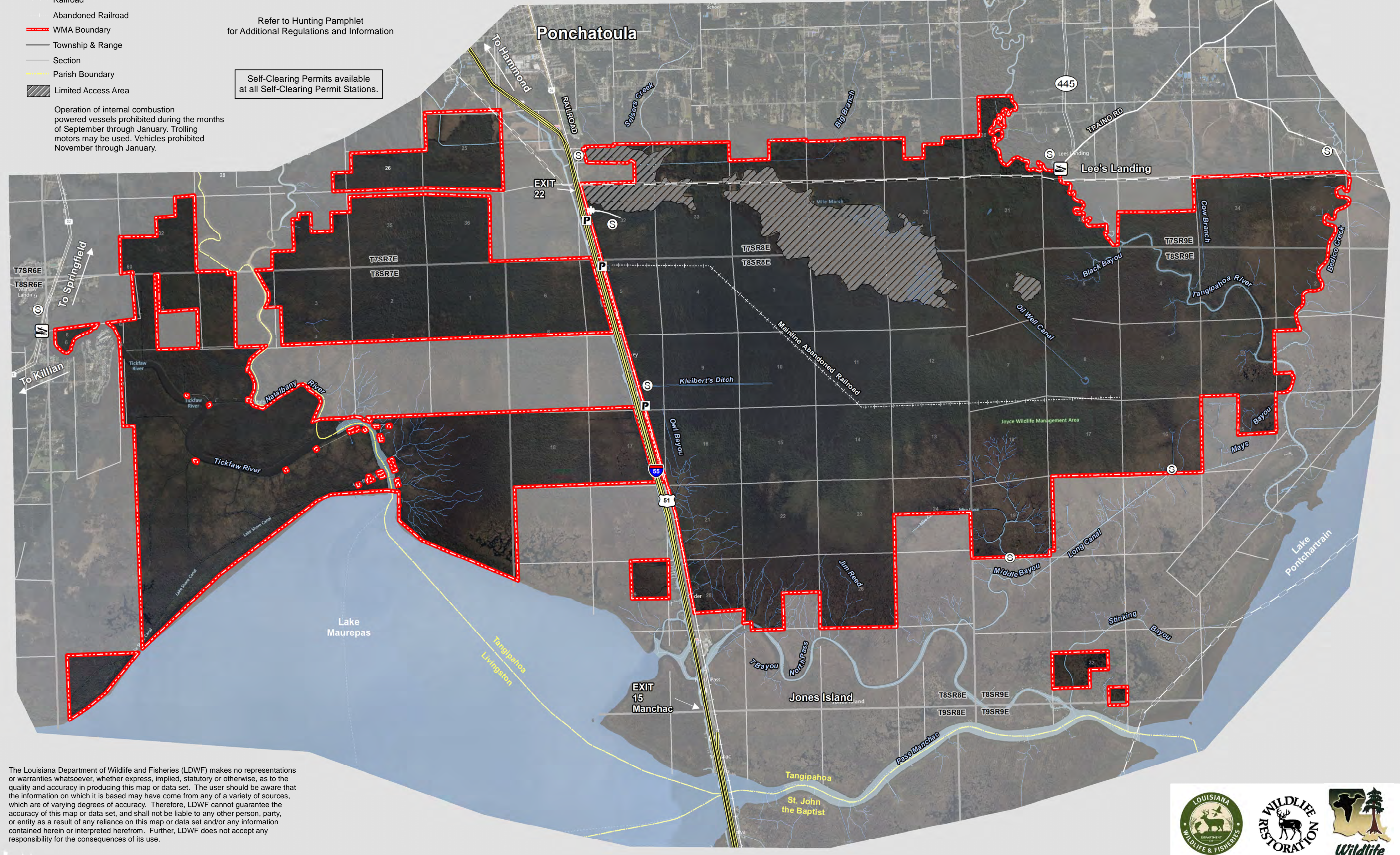
JULY 2023



Refer to Hunting Pamphlet
for Additional Regulations and Information

Self-Clearing Permits available
at all Self-Clearing Permit Stations.

Operation of internal combustion
powered vessels prohibited during the months
of September through January. Trolling
motors may be used. Vehicles prohibited
November through January.



The Louisiana Department of Wildlife and Fisheries (LDWF) makes no representations or warranties whatsoever, whether express, implied, statutory or otherwise, as to the quality and accuracy in producing this map or data set. The user should be aware that the information on which it is based may have come from any of a variety of sources, which are of varying degrees of accuracy. Therefore, LDWF cannot guarantee the accuracy of this map or data set, and shall not be liable to any other person, party, or entity as a result of any reliance on this map or data set and/or any information contained herein or interpreted herefrom. Further, LDWF does not accept any responsibility for the consequences of its use.

